

S.W. 1/4
SECTION 8, T.6N., R.1W., S.L.B. & M.

IN OGDEN CITY & TOWN OF HARRISVILLE

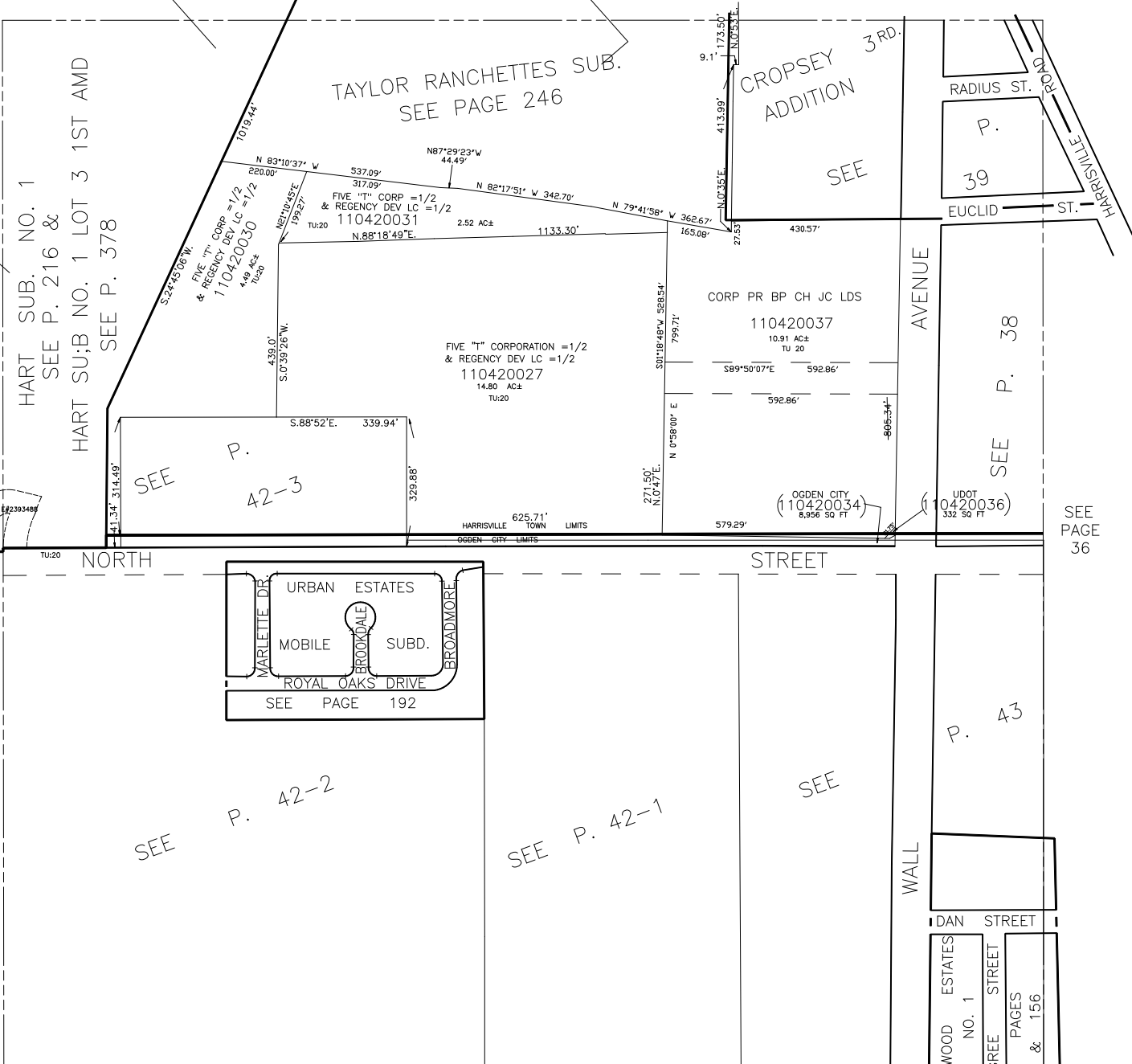
TAXING UNIT: 20, 25

SCALE 1" = 200'

ALSO SEE PAGES 42-1, 2, 3,

SEE P. 33-2

SEE PAGE 33



HART SUB. NO. 1
SEE P. 216 &
HART SUB. NO. 1 LOT 3 1ST AMD
SEE P. 378

SEE P. 42-3

RADIUS ST.
P.
39

SEE P. 38

SEE PAGE 36

SEE P. 25

SEE P. 42-2

SEE P. 42-1

P. 43

PARKWOOD ESTATES NO. 1
PINGREE STREET
SEE PAGES 155 & 156